

Cabinets for ball valves

IDENTIFICATION

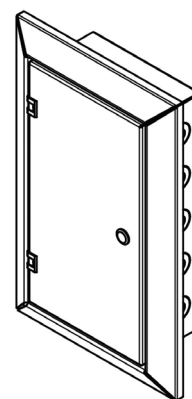
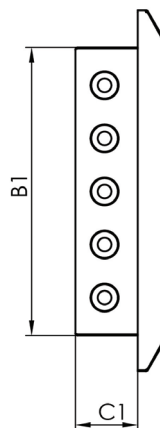
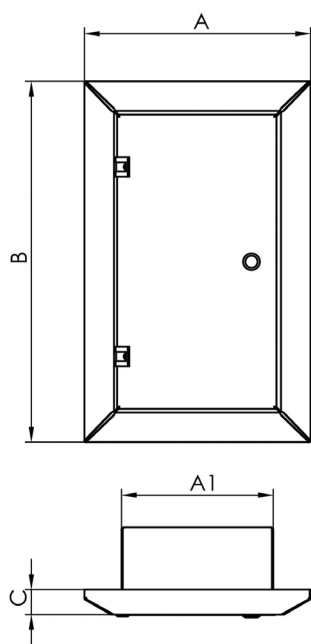
- ▶ Cabinet for shut-off valves in recessed versions with blank door or with blank plate and surface mount versions with transparent door or with blank door
- ▶ Lockable door with transparent polycarbonate window (where present)
- ▶ Provision for connection to earth bonding hub
- ▶ Equipped with disposable panel for wall embedding
- ▶ Possibility of supplying assembled cabinet
- ▶ Facility to customize the cabinet in accordance with the client's requirements

Warranty: 1 year from the Bill Of Lading data

- ▶ Material: 1.5 mm gauge sheet metal
- ▶ Oven-painted in white RAL 9003



FLUSH VERSION WITH LOCKABLE BLANK WINDOW

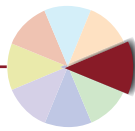


FLUSH VERSION WITH LOCKABLE BLANK WINDOW

CODE	# VALVES SEATS	DIMENSIONS						PACKAGING		
		FINITE DIMENSIONS			EMBEDDED DIMENSIONS			type	cm	kg
		A mm	B mm	C mm	A1 mm	B1 mm	C1* mm			
CA-1103-2200	3 seats	300	340	30	200	240	90 ± 5	box	34 x 38 x 17	4.4
CA-1105-2200	5 seats	300	480	30	200	380	90 ± 5	box	34 x 52 x 17	6.0
CA-1107-2200	7 seats	300	620	30	200	520	90 ± 5	box	34 x 66 x 17	7.4

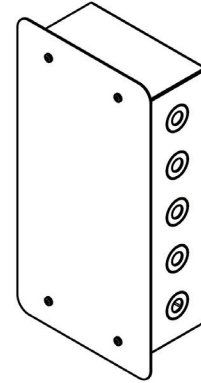
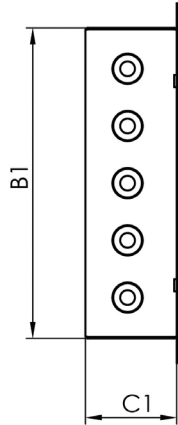
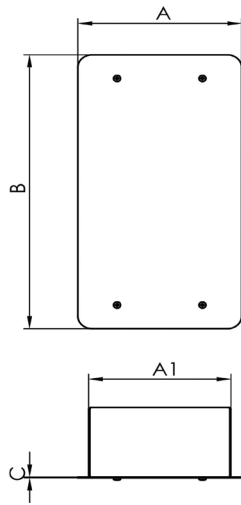
* Recess depth, follow indicated tolerances





Cabinets for ball valves

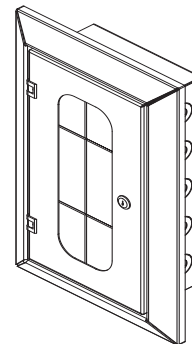
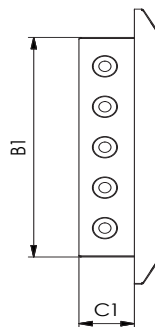
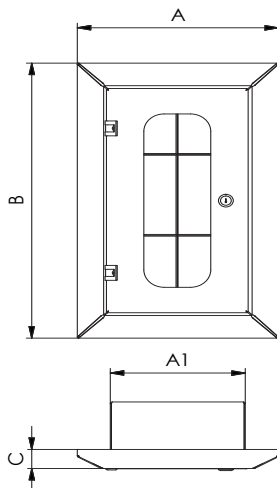
FLUSH VERSION WITH BLANK WINDOW



CODE	# VALVE SEATS	DIMENSIONS						PACKAGING		
		FINITE DIMENSIONS			EMBEDDED DIMENSIONS			type	cm	kg
		A mm	B mm	C mm	A1 mm	B1 mm	C1* mm			
CA-1103-1000	3 seats	230	300	1,5	200	240	100 ^{+15 +0}	box	27 x 34 x 17	1.85
CA-1105-1000	5 seats	230	440	1,5	200	380	100 ^{+15 +0}	box	27 x 48 x 17	2.67
CA-1107-1000	7 seats	230	580	1,5	200	520	100 ^{+15 +0}	box	27 x 62 x 17	3.25

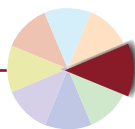
* Recess depth, follow indicated tolerances

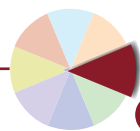
FLUSH VERSION WITH LOCKABLE TRANSPARENT DOOR



CODE	# VALVE SEATS	DIMENSIONS						PACKAGING		
		FINITE DIMENSIONS			EMBEDDED DIMENSIONS			type	cm	kg
		A mm	B mm	C mm	A1 mm	B1 mm	C1* mm			
CA-1103-2200	3 seats	300	340	30	200	240	90 ± 5	box	34 x 38 x 17	4.4
CA-1105-2200	5 seats	300	480	30	200	380	90 ± 5	box	34 x 52 x 17	6.0
CA-1107-2200	7 seats	300	620	30	200	520	90 ± 5	box	34 x 66 x 17	7.4

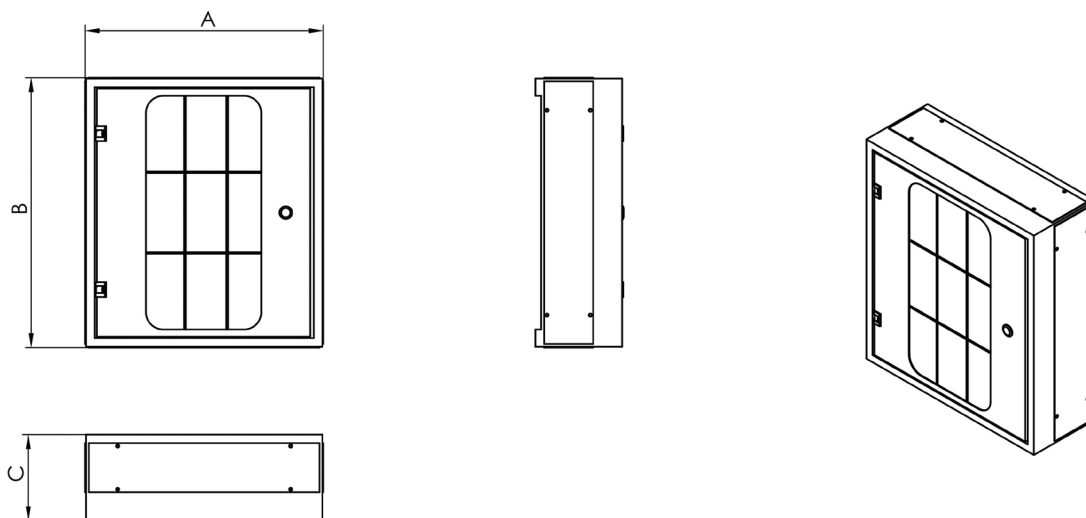
* Recess depth, follow indicated tolerances





Cabinets for ball valves

SURFACE MOUNT VERSION WITH LOCKABLE TRANSPARENT DOOR



PAINTED METAL SHEET VERSION

CODE	# VALVE SEATS	DIMENSIONS			PACKAGING		
		A mm	B mm	C mm	type	cm	kg
CA-1113-2000	2 – 3 seats	410	300	150	box	45 x 34 x 19	8,2
CA-1115-2000	4 – 5 seats	410	465	150	box	45 x 51 x 19	9,6

STAINLESS STEEL VERSION

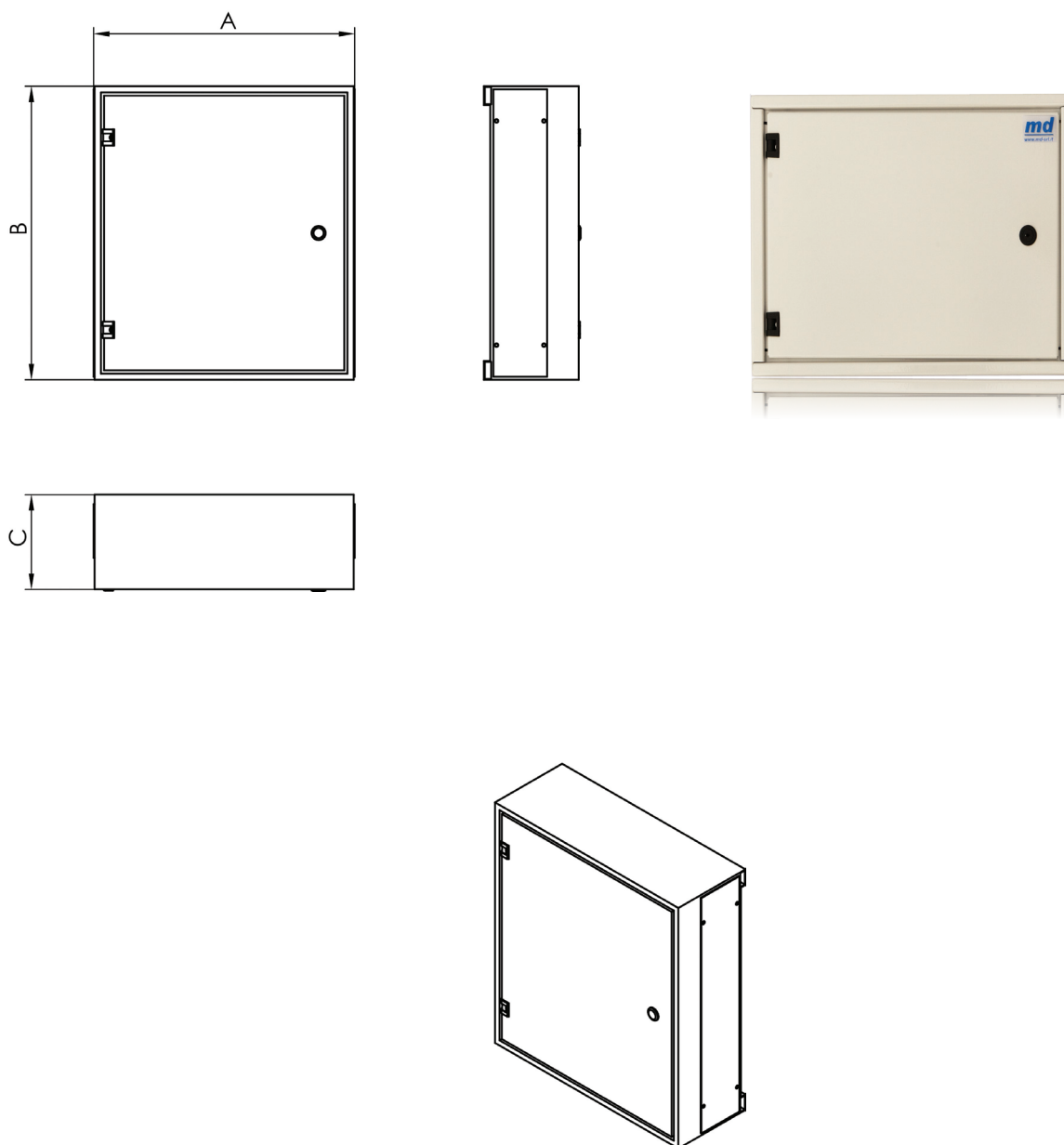
CODE	# VALVE SEATS	DIMENSIONS			PACKAGING		
		A mm	B mm	C mm	type	cm	kg
CA-1104-300I	4 – 5 seats	410	465	150	box	45 x 51 x 19	9,6





Cabinets for ball valves

SURFACE MOUNT VERSION WITH LOCKABLE BLANK WINDOW



SURFACE MOUNT VERSION WITH LOCKABLE BLANK WINDOW

CODE	# VALVE SEATS	DIMENSIONS			PACKAGING		
		A mm	B mm	C mm	type	cm	kg
CA-1113-0000	2 – 3 seats	410	300	150	box	45 x 34 x 19	7.1
CA-1115-0000	4 – 5 seats	410	465	150	box	45 x 51 x 19	10.0

