



Flow meters for oxygen therapy

IDENTIFICATION

- ▶ Flow meters for oxygen and medical air supply
- ▶ Body in chrome-plated brass
- ▶ Supplied in single or double version
- ▶ To be completed with male probe available in most diffused international standards
- ▶ Filter positioned at the tube inlet for patient and flow meter protection
- ▶ Adjustment of gas flow by means of hand-knob
- ▶ Instant reading of the distributed flow rate by means of the graduated scale on the tube (expanded scale for 0 l/min to 5 l/m)
- ▶ Laser-engraved production lot and product code on the flow meter body



CE MARKING

Flow meters:

Notified body 0426

CE marking in risk class II A in accordance with Legislative Decree 24 February 1997, no. 46 "Implementation of Directive 93/42/EEC, concerning Medical Devices" and further modifications

Probes:

Refer to the "Terminal Units" datasheet, "Outlet probes for terminal units" section

REFERENCE STANDARDS

ISO 15002: "Flow-metering devices for connection to terminal units of medical gas pipeline systems"

ISO 15001: "Anaesthetic and respiratory equipment. Compatibility with oxygen"

HTM 02-01: "Medical gas pipeline systems"

*Validity of the standards is referred to the current year



- ▶ Gases: Oxygen, Air, CO₂
- ▶ Measurement scale: 0 ÷ 15 l/min
- ▶ Measurement precision: ± 10%
- ▶ Maximum flow rate: 20 l/min
- ▶ Pressure source limits:
Pmin = 400 kPa; Pmax = 500 kPa
- ▶ Working temperature: +10 °C ÷ +40 °C

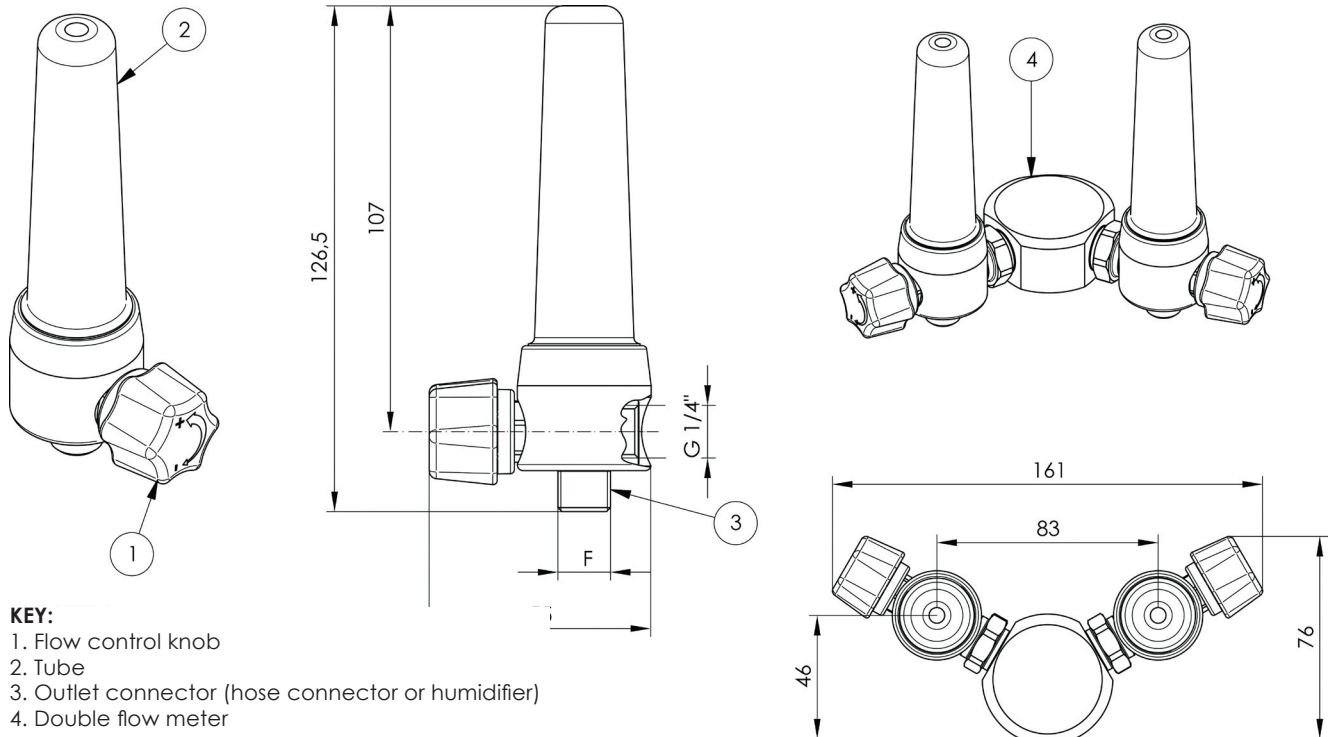
- ▶ Storage temperature: -20 °C ÷ +60 °C
- ▶ Humidifier connection fitting: 1/4" autoclavable humidifier; 9/16" disposable humidifier
- ▶ Resolution: 0.5 l/min between 0 and 6 l/min
- ▶ Resolution: 1 l/min between 6 l/min and 15 l/min
- ▶ Sintered inlet filter with 24 µm mesh
- ▶ Probe connection fitting: G1/4" F





Flow meters for oxygen therapy

DIMENSIONS



FLOW METERS

VERSION	GASES	CODE	OUTLET CONNECTION	PACKAGING		
				type	kg	pcs
Single Flow meter	Oxygen	PF-2600-14O2	G 1/4"	box	0.21	1
		PF-2600-96O2	9/16"	box		
	Medical Air	PF-2600-14AC	G 1/4"	box	0.21	1
		PF-2600-96AC	9/16"	box		
	Carbon Dioxide	PF-2600-14CO	G 1/4"	box	0.21	1
		PF-2600-96CO	9/16"	box		
Double Flow meter	Oxygen	PF-2610-14O2	G 1/4"	box	0.51	1
		PF-2610-96O2	9/16"	box		
	Medical Air	PF-2610-14AC	G 1/4"	box	0.51	1
		PF-2610-96AC	9/16"	box		
	Carbon Dioxide	PF-2610-14CO	G 1/4"	box	0.51	1
		PF-2610-96CO	9/16"	box		

PROBES FOR FLOW METERS

GASES	CODES / REFERENCE STANDARD			
	AFNOR NF S 90-116	UNI 9507	DIN 13260-2	BS 5682
Oxygen	PF-06AF-20O2	PF-06UF-20O2	PF-06DF-20O2	PF-06BF-20O2
Medical Air	PF-06AF-20AC	PF-06UF-20AC	PF-06DF-20AC	PF-06BF-20AC
Carbon Dioxide	PF-06AF-2CO2	PF-06UF-2CO2	PF-06DF-2CO2	-

