

## IDENTIFICATION

- ▶ Cylinder manifolds for connection of high pressure gas sources to the decompression station
- ▶ Modular racks from one to five cylinder seats
- ▶ Cylinders shut-off valves with non-return system (check valve)
- ▶ Galvanized and painted sheet metal frame
- ▶ Gas specific laser-marked plate indicating production lot and product code

## CE MARKING

Notified body: 0426

CE marking in risk class II B in accordance with Legislative

Decree 24 February 1997, no. 46 "Implementation of Directive 93/42/EEC, concerning Medical Devices" and further modifications

## REFERENCE STANDARD

**ISO 7396-1:** "Medical gas pipeline systems - Part 1: Pipeline systems for compressed medical gases and vacuum"

**HTM 02-01:** "Medical gas pipeline systems"

**ISO 15001:** "Anaesthetic and respiratory equipment. Compatibility with oxygen"

\* Validity of the standards is referred to the current year

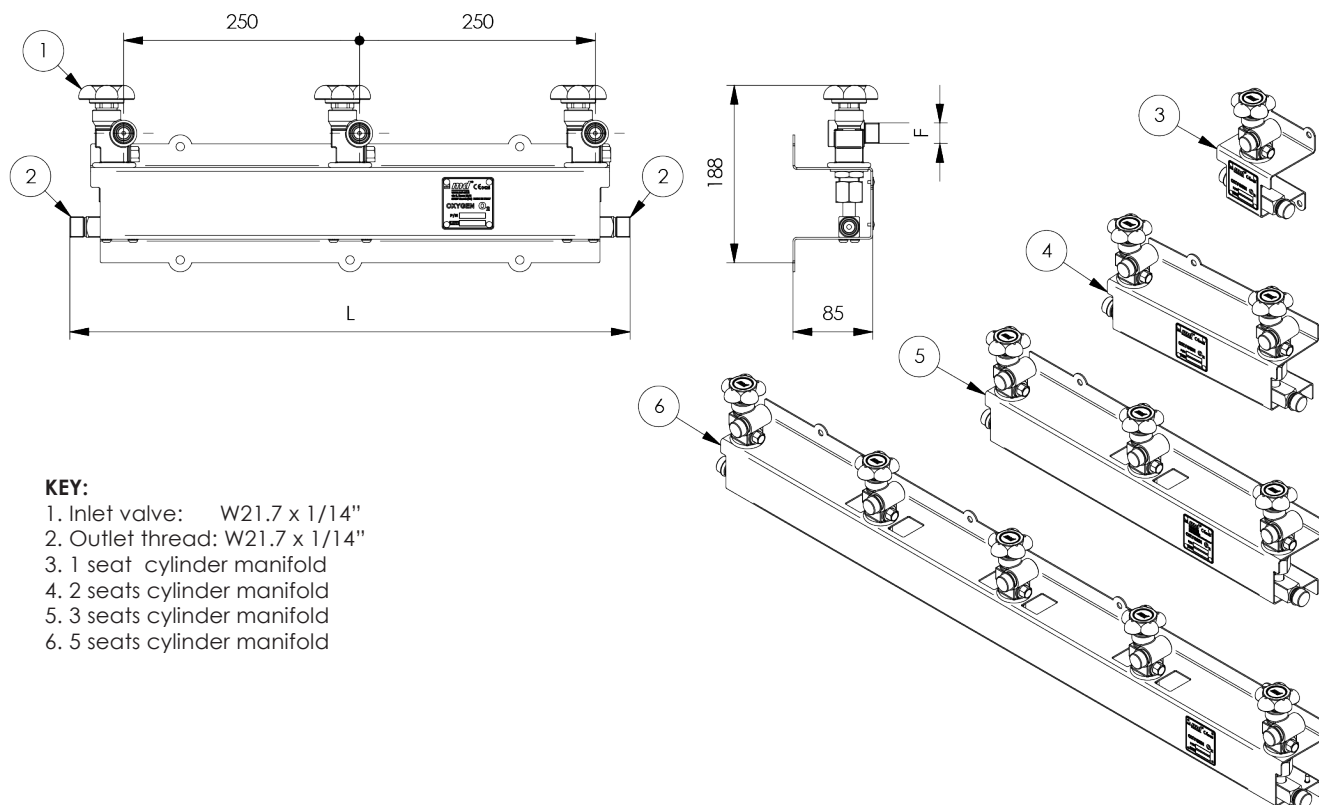
- ▶ Gases: Oxygen, Air, N<sub>2</sub>O, CO<sub>2</sub>
- ▶ Storage and working temperature:  
-20 °C ÷ +60 °C
- ▶ Test pressure: 220 bar

- ▶ Manifold pipe diameter: Ø=10 x 2.5 mm
- ▶ Cylinder manifolds inlet couplings: gas-specific
- ▶ Cylinder manifolds inlet/outlet fitting:  
W 21.7 x 1/14"



# High pressure manifolds

## DIMENSIONS



### KEY:

- 1. Inlet valve: W21.7 x 1/14"
- 2. Outlet thread: W21.7 x 1/14"
- 3. 1 seat cylinder manifold
- 4. 2 seats cylinder manifold
- 5. 3 seats cylinder manifold
- 6. 5 seats cylinder manifold

CODE	GAS	DIMENSIONS		CONNECTIONS		WORKING PRESSURE bar	PACKAGING		
		NUMBER OF SEATS	L mm	THREAD	REFERENCE STANDARD		type	cm	kg
PF-42U1-00O2	O <sub>2</sub>	1	120	W21,7 x 1/14"	UNI 11144	200	box	11 X 22 X 16	2.0
PF-42U1-00AC	Air			W30 x 1/14"	UNI 11144	200			
PF-42U1-0N2O	N <sub>2</sub> O			G 3/8"	UNI 11144	60			
PF-42U1-0CO2	CO <sub>2</sub>			W27 x 2	ISO 5145	60			
PF-42U2-00O2	O <sub>2</sub>	2	344	W21,7 x 1/14"	UNI 11144	200		11 X 22 X 40	4.0
PF-42U2-00AC	Air			W30 x 1/14"	UNI 11144	200			
PF-42U2-0N2O	N <sub>2</sub> O			G 3/8"	UNI 11144	60			
PF-42U2-0CO2	CO <sub>2</sub>			W27 x 2	ISO 5145	60			
PF-42U3-00O2	O <sub>2</sub>	3	594	W21,7 x 1/14"	UNI 11144	200		11 X 22 X 65	6.0
PF-42U3-00AC	Air			W30 x 1/14"	UNI 11144	200			
PF-42U3-0N2O	N <sub>2</sub> O			G 3/8"	UNI 11144	60			
PF-42U3-0CO2	CO <sub>2</sub>			W27 x 2	ISO 5145	60			
PF-42U5-00O2	O <sub>2</sub>	5	1094	W21,7 x 1/14"	UNI 11144	200		11 X 22 X 115	8.0
PF-42U5-00AC	Air			W30 x 1/14"	UNI 11144	200			
PF-42U5-0N2O	N <sub>2</sub> O			G 3/8"	UNI 11144	60			
PF-42U5-0CO2	CO <sub>2</sub>			W27 x 2	ISO 5145	60			

