



# High pressure relief valves

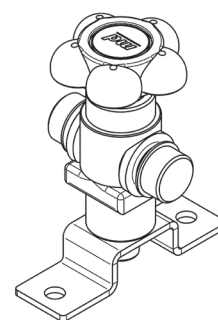
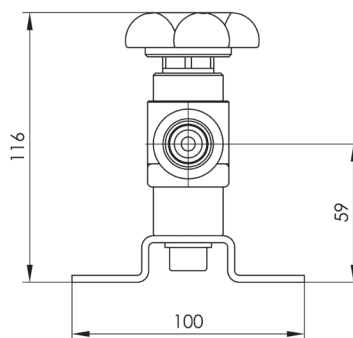
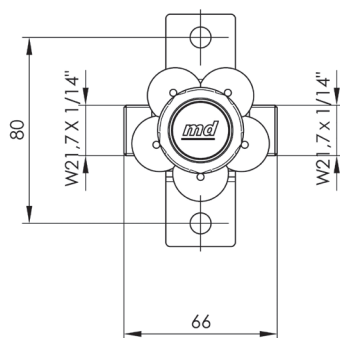
## IDENTIFICATION

- ▶ Shut-off valve with spindle seal
- ▶ Inlet and outlet connection fitting: W 21.7 x 1/14" male
- ▶ Degreased for use with oxygen in compliance with ISO 15001
- ▶ Working pressure: P= 200 bar
- ▶ Available with fitting for pipe welding on inlet and outlet sides Ø 10 mm or Ø 13 mm (optional)
- ▶ Wall bracket

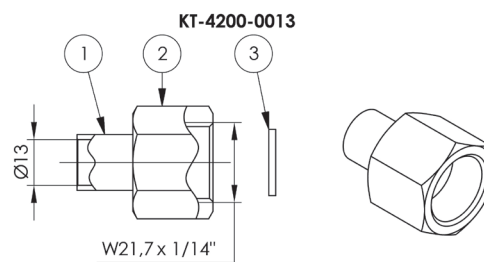
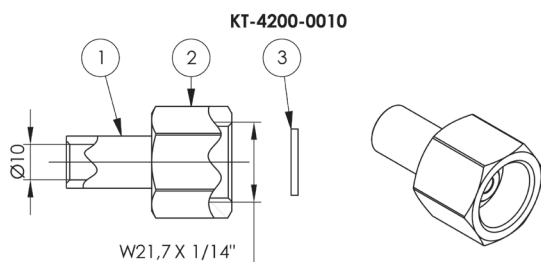


## DIMENSIONS

### HP SHUT-OFF VALVE



### FITTINGS FOR PIPE WELDING



#### KEY:

1. Fitting for pipe welding
2. Nut
3. Copper gasket

### HP SHUT-OFF VALVE

CODE	DESCRIPTION	GAS	INLET/OUTLET FITTINGS	WORKING PRESSURE bar	PACKAGING	
					type	kg
PF-4200-00EV	HP shut-off valve	All gases	W21.7 x 1/14"	200	bag	0.7

### FITTINGS FOR PIPE WELDING

CODE	DESCRIPTION	PIPE Ø	WORKING PRESSURE bar	PACKAGING	
				type	kg
KT-4200-0010	Ø10 pipe welding kit (fitting, nut and gasket)	Ø10	200	bag	0.12
KT-4200-0013	Ø13 pipe welding kit (fitting, nut and gasket)	Ø13	200	bag	0.10





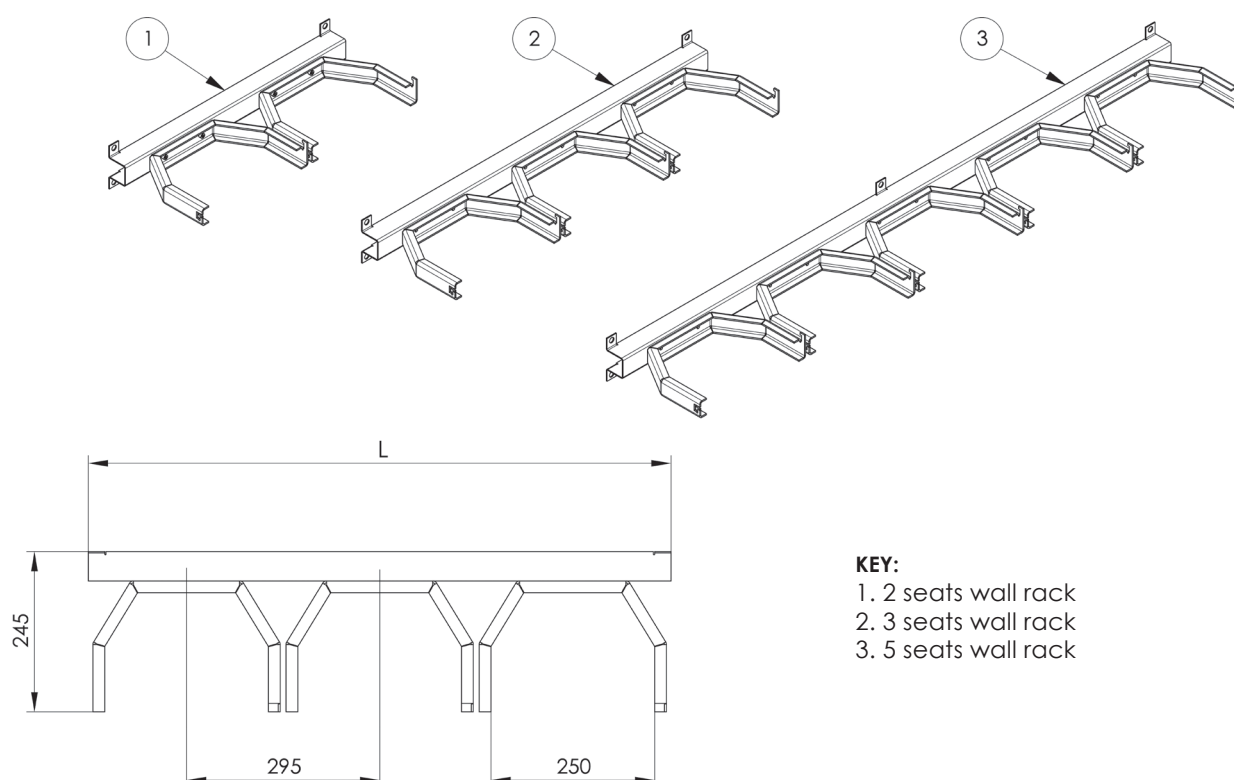
## Cylinders racks



### IDENTIFICATION

- ▶ Wall rack for holding gas cylinders
- ▶ Modular layout of elements; customization of number of cylinder seats (on request)
- ▶ Cold zinc coating for outdoor applications
- ▶ Chains for fastening cylinders in vertical position
- ▶ C section profile with holes for secure wall fixing

### DIMENSIONS



**KEY:**

- 1. 2 seats wall rack
- 2. 3 seats wall rack
- 3. 5 seats wall rack

CODE	# OF CYLINDERS	L mm	PACKAGING	
			type	kg
PF-3902-0000	2	570	bag	3.2
PF-3903-0000	3	865	bag	4.7
PF-3905-0000	5	1480	bag	7.7

