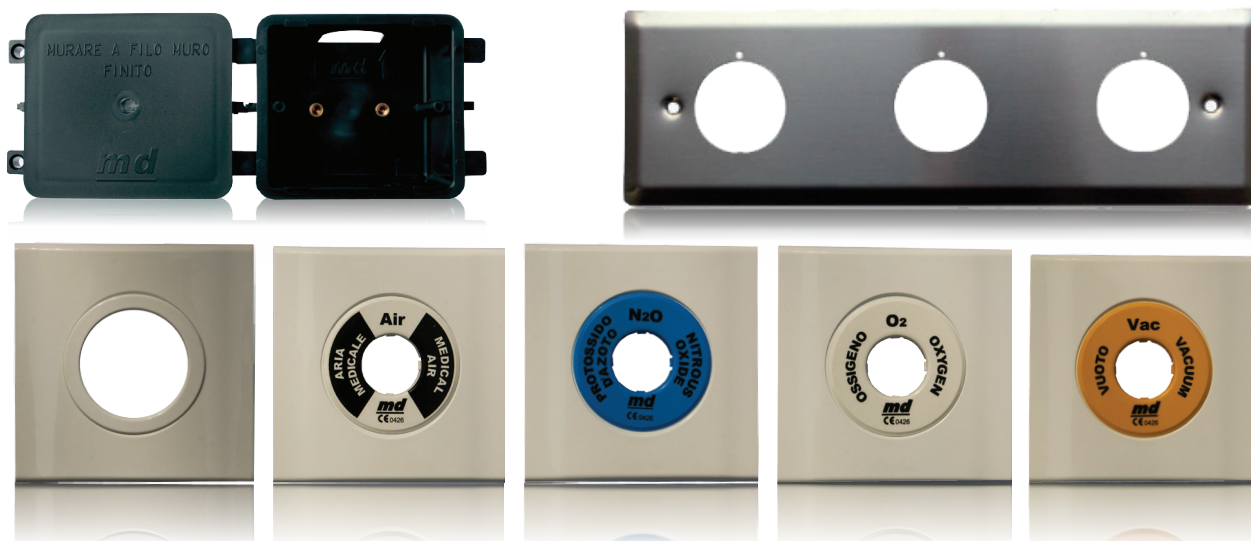


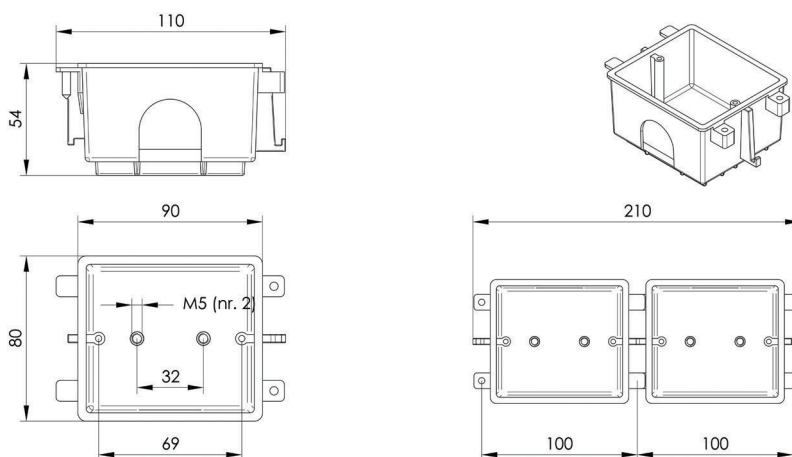
Recessed installation systems for terminal units



RECESSED BOX

- ▶ Recessed wall outlet box for installation of medical gas distribution and anaesthetic gas scavenging terminal units (model for systems with centralized blower)
- ▶ Equipped with disposable cap
- ▶ Manufactured in black ABS with threaded inserts for fixing terminal units
- ▶ Modular design to allow multiple boxes to be installed in series
- ▶ Facility to blank off the box by means of a plastic cover (on request)

DIMENSIONS



RECESSED BOX

CODE	DESCRIPTION	PACKAGING	
		type	kg
PF-2100-1000	Recessed wall outlet box for installation of medical gas distribution and anaesthetic gas scavenging	unboxed	0.18

ABS FRONT COVER

- ▶ White ABS plastic cover to close the recessed box
- ▶ Modular design to allow multiple systems to be installed in series
- ▶ Facility for customization with different colors

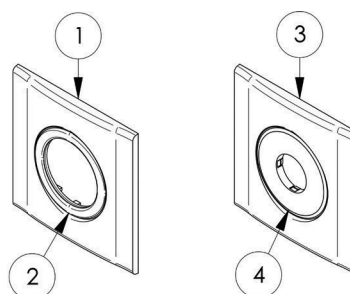
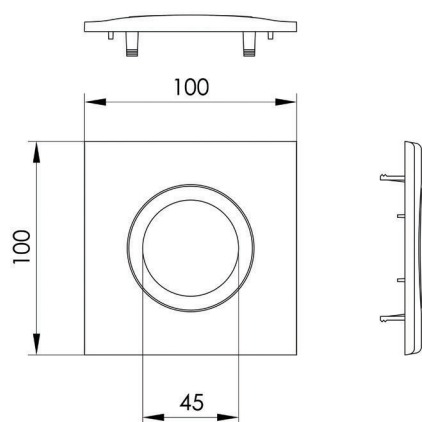




Recessed installation systems for terminal units



DIMENSIONS



KEY:

1. Standard front cover PL-2301-1000
2. Complement ring (included)
3. AFNOR / NIST configuration
4. Gas colour coded ring (PL-23A0-1xxx)

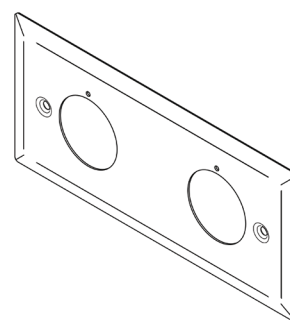
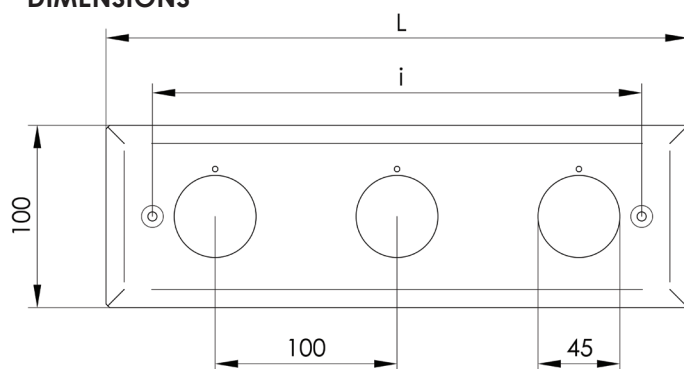
ABS FRONT COVER

CODE	DESCRIPTION	PACKAGING		
		type	kg	pcs
PL-2301-1000	White ABS plastic front cover for recessed box	bag	0.03	2

STAINLESS STEEL COVER

- ▶ Front cover in AISI 304 stainless steel to close the recessed box
- ▶ Satin external finish
- ▶ Supplied with protective film
- ▶ Provision for wall fixing by means of screw-wall plug system
- ▶ Facility for customization to client specifications

DIMENSIONS



STAINLESS STEEL COVER

CODE	SEATS	L mm	i mm	PACKAGING	
				type	kg
PL-2302-1000	1	120	69	unboxed	0.08
PL-2302-2000	2	220	169	unboxed	0.15
PL-2302-3000	3	320	269	unboxed	0.23
PL-2302-4000	4	420	369	unboxed	0.27
PL-2302-5000	5	520	469	unboxed	0.35
PL-2302-6000	6	620	569	unboxed	0.42

