

## Shut-off ball valves

### IDENTIFICATION

- ▶ Full-bore 2-way floating-ball valves
- ▶ Nickel-plated brass body
- ▶ Inlet and outlet fitting type FF ISO 228
- ▶ 3-piece couplings in brass with fitting for pipe welding
- ▶ Facility to install hall sensor to monitor valve service status (open or closed)

### CE MARKING

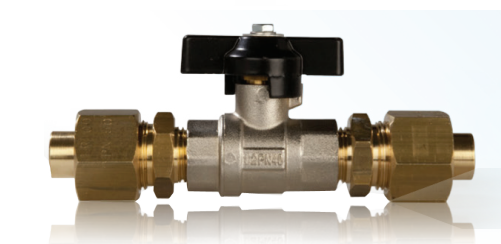
CE marking according to Directive 97/23/EC (PED)

### REFERENCE STANDARDS

**ISO 7396-1:** "Medical gas pipeline systems - Part 1: Pipeline systems for compressed medical gases and vacuum"

**ISO 15001:** "Anaesthetic and respiratory equipment - Compatibility with oxygen"

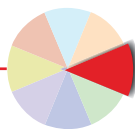
\* Validity of the standards is referred to the current year



- ▶ Gases: Vacuum, Oxygen, Medical Air, Nitrous Oxide, Carbon Dioxide, Instrument Air

- ▶ Working temperature: +10 °C ÷ +40 °C
- ▶ Nominal pressure PN 40
- ▶ Storage temperature: -20 °C ÷ +60 °C

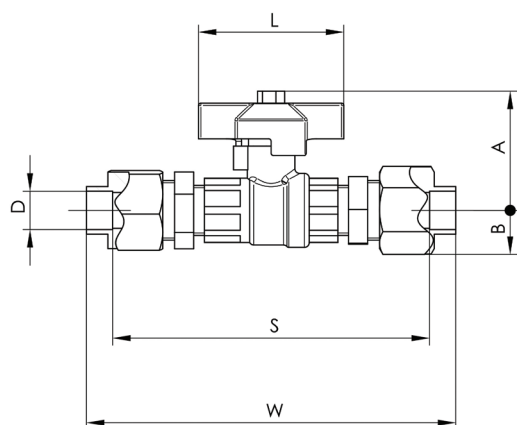
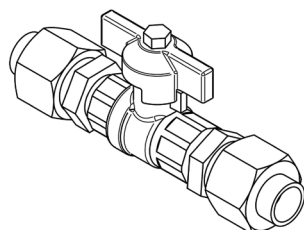




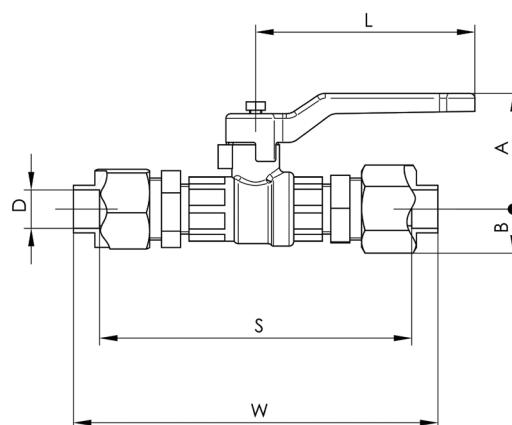
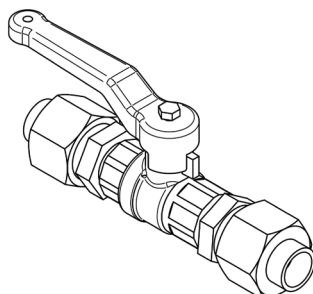
# Shut-off ball valves

## DIMENSIONS

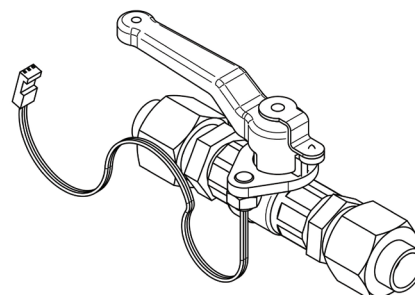
### BUTTERFLY CONTROL



### LEVER HANDLE



### LEVER HANDLE WITH VALVE SERVICE STATUS SENSOR



## BUTTERFLY SHUT OFF VALVES WITH 3-PIECE FITTINGS

CODE	DN	D mm	L mm	S* mm	W* mm	A mm	B mm	PACKAGING	
								type	kg
PF-111S-0012	G 3/8"	12	61	130	155	46	16	bag	0.39
PF-111S-1014	G 1/2"	14	61	130	155	56	19	bag	0.65
PF-111S-1016	G 1/2"	16	61	130	155	56	19	bag	0.65
PF-111S-2022	G 3/4"	22	61	140	180	66	25	bag	1.08
PF-111S-3028	G 1"	28	80	150	190	75	29	bag	1.56

Variable dimension: ± 2%

## LEVER SHUT OFF VALVES WITH 3-PIECE FITTINGS

CODE		DN	D mm	L mm	S* mm	W* mm	A mm	B mm	PACKAGING	
WITH SENSOR	WITHOUT SENSOR								type	kg
PF-110A-1014	PF-110S-1014	G 1/2"	14	92	130	155	49	19	bag	0.65
PF-110A-1016	PF-110S-1016	G 1/2"	16	92	130	155	49	19	bag	0.65
PF-110A-2022	PF-110S-2022	G 3/4"	22	92	140	180	56	25	bag	1.08
PF-110A-3028	PF-110S-3028	G 1"	28	115	150	190	59	29	bag	1.56
PF-110A-4035	PF-110S-4035	G 1" 1/4	35	150	190	230	80	34	bag	2.80
PF-110A-5042	PF-110S-5042	G 1" 1/2	42	150	240	280	80	40	bag	3.56
PF-110A-6054	PF-110S-6054	G 2"	54	150	300	340	111	56	bag	5.54

Variable dimension: ± 2%

