

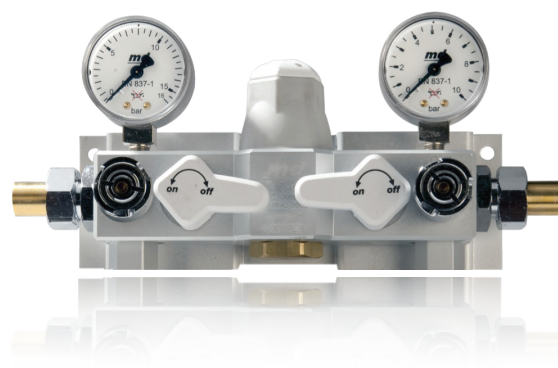


Single second-stage pressure regulators



IDENTIFICATION

- ▶ Second stage pressure regulator in single version with anodized aluminium body
- ▶ Dual emergency supply inlet available in versions AFNOR NF S 90-116 and NIST (high and low pressure)
- ▶ Integrated shut-off valves on pressure regulator inlet and outlet
- ▶ Inlet and outlet pressure gauges
- ▶ Facility to install pressure sensor for downstream pressure monitoring
- ▶ Pipes inlet and outlet with fitting for pipe welding
- ▶ Shut-off valves seal by means of Teflon elements
- ▶ Sintered inlet filter to protect downstream line
- ▶ Check valve for replacement of pressure gauges and pressure sensor
- ▶ Emergency supply point connection with check valve
- ▶ Identification of inlet and outlet closing hand-knobs by means of color associated with the distributed gas
- ▶ Laser engraved marking of production lot and product code
- ▶ Emergency AFNOR supply point with internal non-return system, allowing maintenance without interruption of gas flow
- ▶ Screw pressure adjustment for exit gas flow



CE MARKING

Notified body: 0426

CE marking in risk class II B in accordance with Legislative Decree 24 February 1997, no. 46 "Implementation of Directive 93/42/EEC, concerning Medical Devices" and further modifications

REFERENCE STANDARD

ISO 10524-2: "Pressure regulators for use with medical gases - Part 2: Manifold and line pressure regulators"

ISO 7396-1: "Medical gas pipeline systems - Part 1: Pipeline systems for compressed medical gases and vacuum"

ISO 15001: "Anaesthetic and respiratory equipment. Compatibility with oxygen"

* Validity of the standards is referred to the current year

- ▶ Gases: Oxygen, Medical Air, Nitrous Oxide, Carbon Dioxide, Instrument Air
- ▶ Storage temperature: -20 °C ÷ +60 °C
- ▶ Working temperature: +10 °C ÷ +40 °C
- ▶ Inlet/outlet pipe diameter: Ø = 14 x 1 mm
- ▶ Inlet degree of filtration ≤ 35 µm

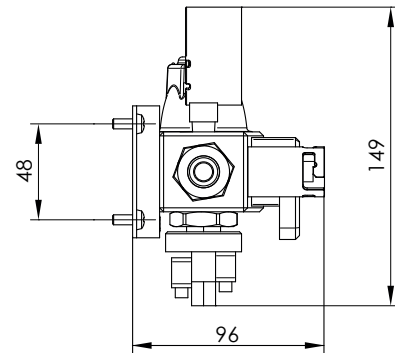
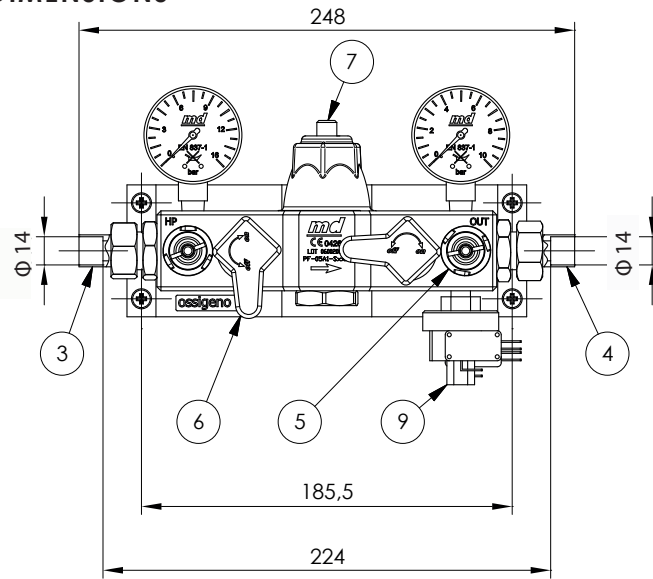
- ▶ Provision for pressure sensor connection G 1/8"
- ▶ Provision for pressure gauge connection G 1/8"
- ▶ Inlet pressure gauge scale: 0 ÷ 16 bar
- ▶ Outlet pressure gauge scale: 0 ÷ 10 bar
- ▶ Inlet/outlet pressure gauges accuracy class: 2.5
- ▶ Packaging and dimensions: box, 20.5 x 30 x 13 cm
- ▶ Weight (item code **PF-05x1-yyyy**): 1.85 Kg





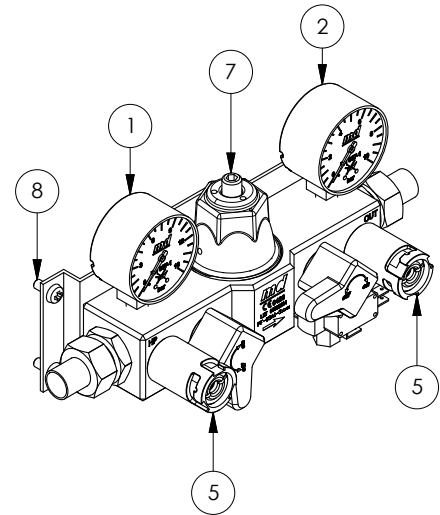
Single second-stage pressure regulators

DIMENSIONS

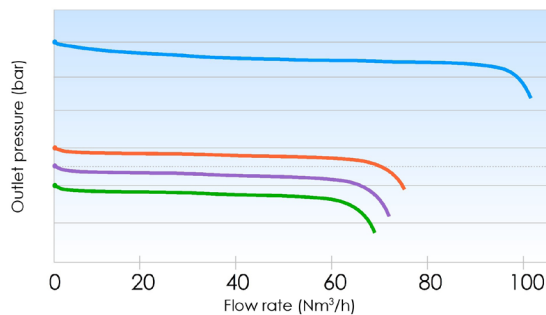


KEY:

1. 0-16 bar Inlet pressure gauge
2. 0-10 bar Outlet pressure gauge
3. Inlet welding fitting for Ø14 mm pipe
4. Outlet welding fitting for Ø14 mm pipe
5. Emergency inlet (no. 2)
(type AFNOR or NIST)
6. Shut-off valve (no. 2)
7. Pressure regulating screw
8. M5 fastening screw (no. 4)
9. [opzionale] High/Low line pressure switch
10. [opzionale] Pressure switch wiring connector

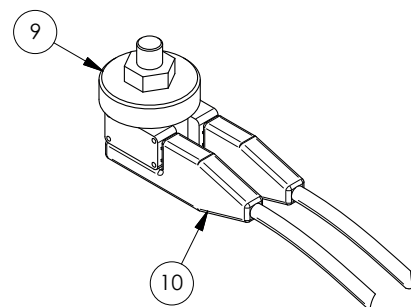


PRESSURE/FLOW CHARACTERISTIC, $P_{in} = 8$ bar
TEST PERFORMED WITH AIR



LEGENDA:

- $P_{out} = 8$ bar
- $P_{out} = 5$ bar
- $P_{out} = 4,5$ bar
- $P_{out} = 4$ bar



GAS	CODE/ EMERGENCY INLET SUPPLY		NOMINAL OUTLET PRESSURE bar	OUTLET GAUGES SCALE	PRESSURE SWITCH [OPTIONAL]*
	AFNOR	NIST			
O ₂	PF-05A1-S0O2	PF-05N1-S0O2	4 ^{+1.0} _{-0.0}	0-10 bar	KT-2200-1000
Medical Air	PF-05A1-S0AC	PF-05N1-S0AC	4 ^{+1.0} _{-0.0}	0-10 bar	KT-2200-1000
CO ₂	PF-05A1-SCO2	PF-05N1-SCO2	4 ^{+1.0} _{-0.0}	0-10 bar	KT-2200-1000
N ₂ O	PF-05A1-SN2O	PF-05N1-SN2O	4 ^{+1.0} _{-0.0}	0-10 bar	KT-2200-1000
Instrumental Air	PF-05A1-SAC8	PF-05N1-SAC8	8 ^{+2.0} _{-1.0}	0-16 bar	KT-2200-2000

* Connection cables not included.

Connection cables available: L = 0.7 m (cod. MP-2200-5000); L = 1.5 m (cod. MP-2200-3000); L = 2.5 m (cod. MP-2200-4000)

Note: SM-05AS-0000 - simulacrum to replace the pressure reducer for tests and checks
SM-05OS-0000 - simulacrum connection kit

