

Terminal units for anaesthetic gas scavenging

-Venturi type 1 active system

IDENTIFICATION

- ▶ Venturi TYPE 1 active terminal unit for anaesthetic gas scavenging systems
- ▶ Pneumatic indicator to show that the terminal unit is operating (with probe inserted)
- ▶ Specific colour coded front ring and manufacturer CE marking
- ▶ Facility for wall mounting in stainless steel recessed box or surface mount box or bed head panels and pendants
- ▶ Outlet body in anodized aluminium
- ▶ Recessed box with provision for connection to earth bonding hub
- ▶ Facility for the user to adjust performance in 1L or 1H
- ▶ Laser-engraved of production lot and product code

CE MARKING

Notified body: CE 0426

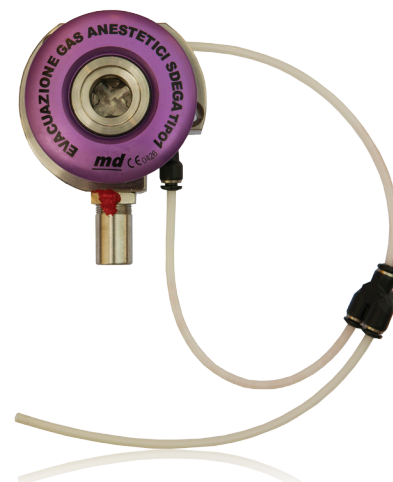
CE marking in risk class II A in accordance with Legislative Decree 24 February 1997, no. 46 "Implementation of Directive 93/42/EEC, concerning Medical Devices" and further modifications

REFERENCE STANDARD

ISO 9170-2: "Terminal units for medical gas pipeline systems - Part 2: Terminal units for anaesthetic gas scavenging systems"




ISO 7396-2: "Medical gas pipeline systems - Part 2: Anaesthetic gas scavenging disposal systems"

* Validity of the standards is referred to the current year



- ▶ GAS: anaesthetic gas scavenging
- ▶ Storage temperature: -20 °C ÷ +60 °C
- ▶ Working temperature: +10 °C ÷ +40 °C
- ▶ Nominal scavenging pressure: -15 kPa
- ▶ Connection to purge pipe with hose connector for spiral hose Øi= 16 mm

- ▶ Flow rate of air supplied to Venturi pipe: 25 ÷ 30 l/min
- ▶ Venturi pipe air supply pressure: 4.5 bar
- ▶ Scavenging level settings:
1 kPa ,Q< 50 l/min
2 kPa Q> 25 l/m (socket type 1L)

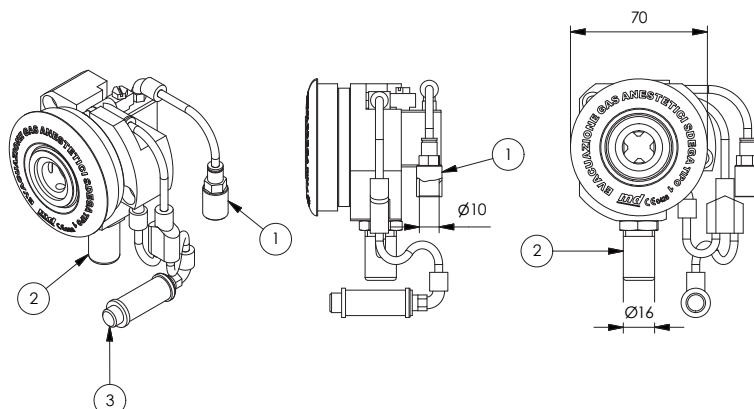
CODE	DESCRIPTION	PACKAGING		
		 type	 kg	 pcs
PF-02ES-10EV	Venturi type 1 active outlets for anaesthetic gas scavenging systems for bed head panels and pendants installation	box	1.24	1
PF-02ES-20EV	Venturi type 1 active outlets for anaesthetic gas scavenging systems for flush installation	box	0.96	1
PF-02ES-30EV	Venturi type 1 active outlets for anaesthetic gas scavenging systems (INOX) for bed head panels and pendants installation	box	1.24	1
PF-02ES-40EV	Venturi type 1 active outlets for anaesthetic gas scavenging systems (INOX) for flush installation	box	0.96	1
CA-02ES-10EV	Flush box and stainless steel panel for Venturi type 1 outlet	box	0.58	1
KT-3400-1AEV	Wall mounting aluminium box	box	0.30	1





Terminal units for anaesthetic gas scavenging -Venturi type 1 active system

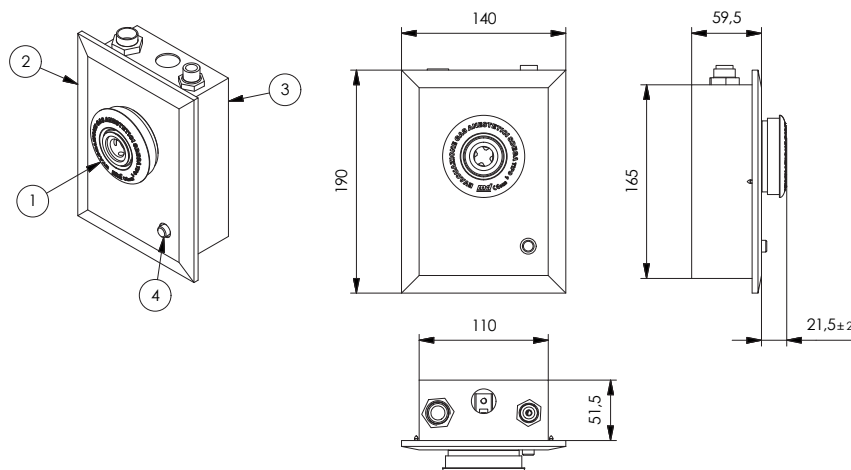
PANEL INSTALLATION (PF-02ES-10EV)



KEY:

1. Air supply inlet
2. Scavenging pipe connection
3. Pneumatic indicator

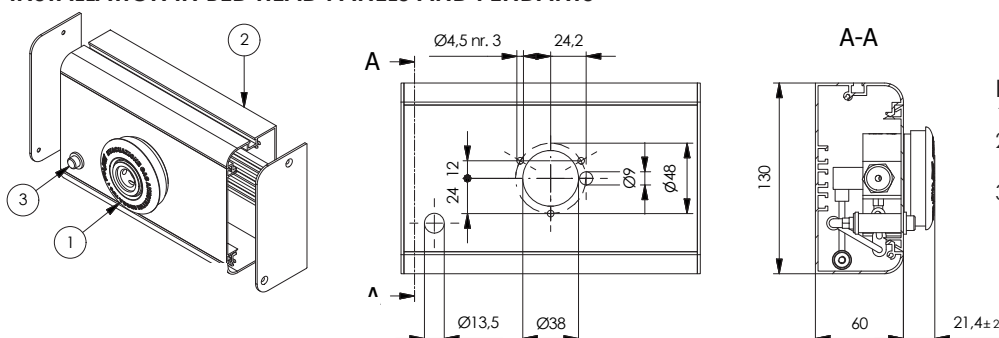
INSTALLATION WITH STAINLESS STEEL COVER (PF-02ES-20EV) AND RECESSED BOX (CA-02ES-10EV)



KEY:

1. Venturi scavenging outlet
2. Stainless steel cover (included in PF-02ES-20EV)
3. Stainless steel recessed box (CA-02ES-10EV)
4. Pneumatic indicator

INSTALLATION IN BED HEAD PANELS AND PENDANTS



KEY:

1. Venturi scavenging outlet
2. Extruded profile AQ-3400-xxxx (on request)
3. Pneumatic indicator

