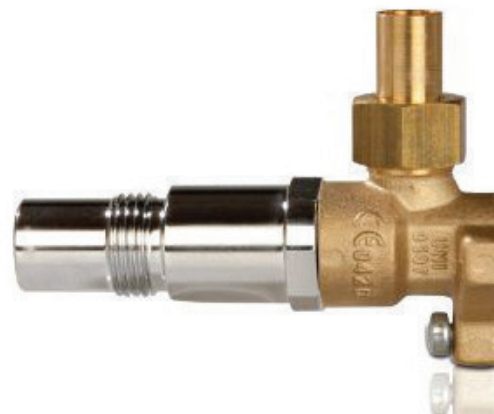




# Terminal units for Instrument air

### IDENTIFICATION

- ▶ Terminal unit for compressed air at nominal pressure of 8.0 bar for instrument uses
- ▶ Base block featuring fitting for pipe braze welding with mechanical seal or hose connector
- ▶ Base block in brass with check valve that stops backflow, equipped with plug for gas system leakage tests
- ▶ Base block with provision for connection to earth bonding hub
- ▶ Specific shape coded socket (NIST) in nickel-plated brass
- ▶ Outlet available also in oversized version for special applications
- ▶ Package including M5 fixing screws (no. 3)
- ▶ Facility for wall mounting in recessed box, surface mount box or bed head panels and pendants
- ▶ Laser-engraved production lot and product code



### CE MARKING

Notified body: CE 0426

CE marking in risk class II B in accordance with Legislative Decree 24 February 1997, no. 46 "Implementation of Directive 93/42/EEC, concerning Medical Devices" and further modifications

### REFERENCE STANDARD

**ISO 9170-1:** "Terminal units for medical gas pipeline systems - Part1: Terminal units for use with compressed medical gases and vacuum"

**ISO 5359:** "Low-pressure hose assemblies for use with medical gases"

**ISO 7396-1:** "Medical gas pipeline systems - Part 1: Pipeline systems for compressed medical gases and vacuum"

**HTM 02-01:** "Medical gas pipeline systems"

**ISO 15001:** "Anaesthetic and respiratory equipment. Compatibility with oxygen"

\* Validity of the standards is referred to the current year



- ▶ GAS: Instrument Air
- ▶ Storage temperature: -20 °C ÷ +60 °C
- ▶ Working temperature: +10 °C ÷ +40 °C
- ▶ Working nominal pressure: 8,0<sup>+2,0</sup><sub>-1,0</sub> bar

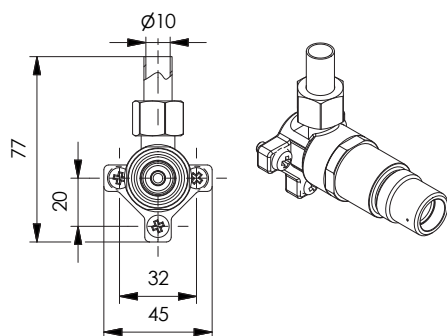
- ▶ NBR seal between base block and outlet
- ▶ Connection with welding pipe Øe= 10 mm
- ▶ Hose connector for flexible hose Øi= 6 ÷ 6,5 mm



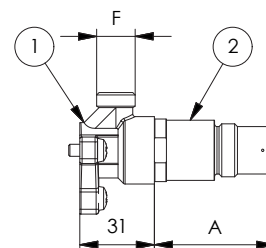
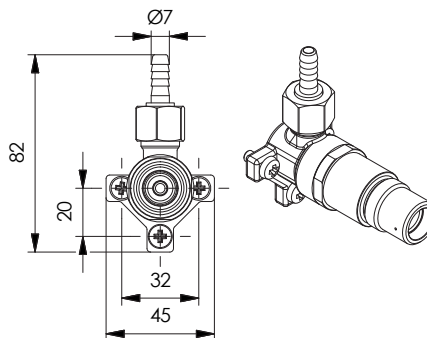


## DIMENSIONS

BASE BLOCK WITH WELDING FITTING



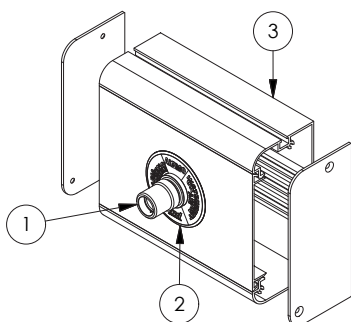
BASE BLOCK WITH HOSE BARB



## KEY:

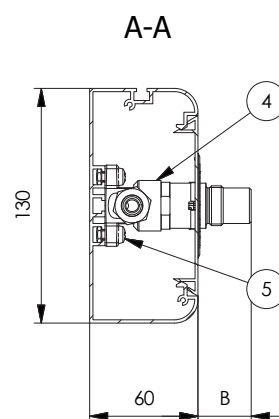
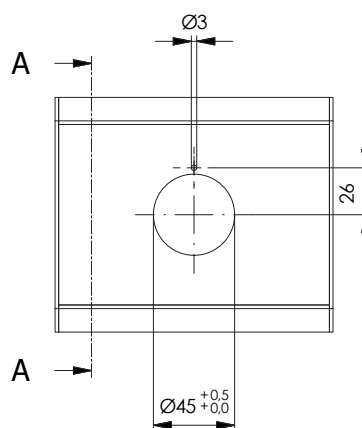
- 1. Base block
- 2. Outlet

## INSTALLATION IN BED HEAD PANELS AND PENDANTS



## KEY:

- 1. NIST Outlet
- 2. Color coded ring PL-23N0-1AC8
- 3. Extruded profile AQ-3400-xxxx (on request)
- 4. Base block for Instrument Air
- 5. M5 Screws (No. 3 included)



CODE	DESCRIPTION	DIMENSIONS		PACKAGING		
		A mm	B mm	type	kg	pcs
PF-01US-0AC8	Base block with welding fitting	-	-	bag	0.21	1
PF-01UP-0AC8	Base block with hose barb	-	-	bag	0.21	1
PF-02NU-0AC8	NIST outlet for Instrument Air standard	50	50 ÷ 55	bag	0.17	1
PF-02NU-1AC8	NIST outlet for Instrument Air oversized	56.5	56 ÷ 61	bag	0.19	1

