

# Terminal units type UNI 9507



### IDENTIFICATION

- ▶ Terminal units for compressed medical gases and vacuum, type UNI 9507
- ▶ Base block equipped with fitting for pipe welding with mechanical seal or hose connector
- ▶ Base block in brass with check valve that stops the pressurized gas flow, equipped with plug for gas system leakage tests
- ▶ Base block with provision for connection to earth bonding hub
- ▶ Outlet in nickel-plated brass
- ▶ Package including M5 fixing screws (no. 3)
- ▶ Facility for wall mounting in recessed box surface box or in bed head panels and pendants
- ▶ Laser-engraved production lot and product code



### CE MARKING

Notified body: CE 0426

CE marking in risk class II B in accordance with Legislative Decree 24 February 1997, no. 46 "Implementation of Directive 93/42/EEC, concerning Medical Devices" and further modifications

### REFERENCE STANDARD

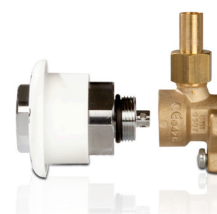
**ISO 9170-1:** "Terminal units for medical gas pipeline systems - Part 1: Terminal units for use with compressed medical gases and vacuum"

**ISO 7396-1:** "Medical gas pipeline systems - Part 1: Pipeline systems for compressed medical gases and vacuum"

**UNI 9507:** "Medical gas pipeline systems - Terminal units"

**ISO 15001:** "Anaesthetic and respiratory equipment. Compatibility with oxygen"

\* Validity of the standards is referred to the current year



- ▶ Gases: Oxygen, Medical Air, Nitrous Oxide, Vacuum, Carbon Dioxide, Instrument Air
- ▶ Storage temperature: -20 °C ÷ +60 °C
- ▶ Working temperature: +10 °C ÷ +40 °C

- ▶ NBR seal between base block and outlet
- ▶ Connection with welding pipe Øe=10 mm
- ▶ Hose connector for flexible hose Øi= 6 ÷ 6,5 mm

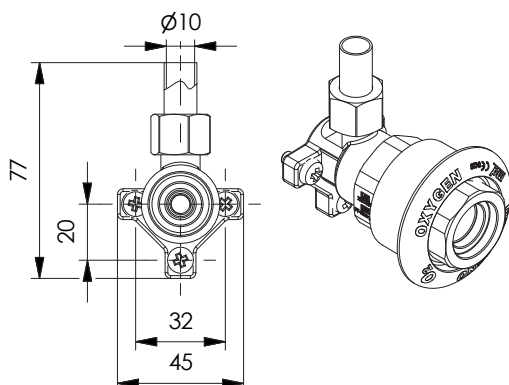




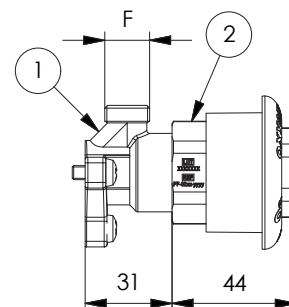
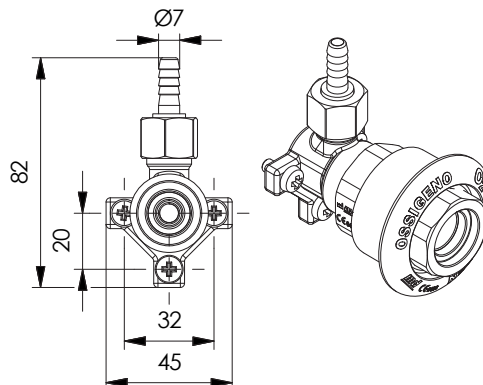
# Terminal units type UNI 9507

## DIMENSIONS

### BASE BLOCK WITH WELDING FITTING

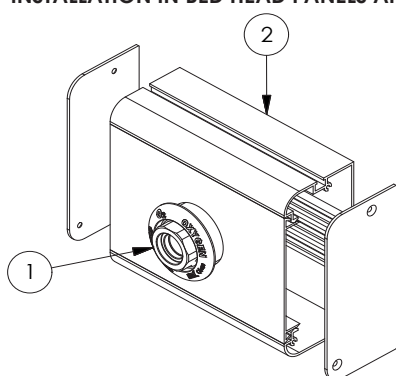


### BASE BLOCK WITH HOSE BARB



**KEY:**  
 1. Base block  
 2. Outlet

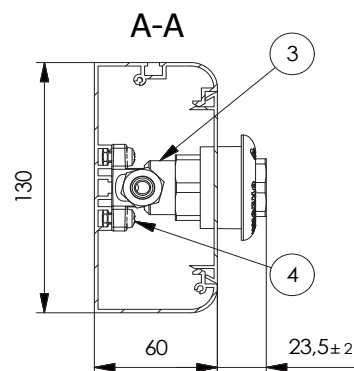
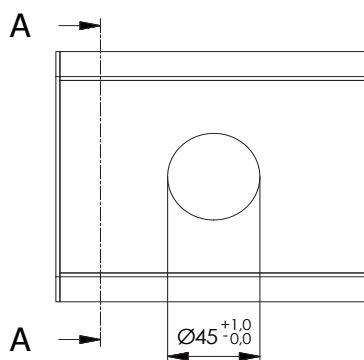
### INSTALLATION IN BED HEAD PANELS AND PENDANTS



#### KEY:

1. UNI 9507 Outlet
2. Extruded profile AQ-3400-xxxx (on request)
3. UNI 9507 Base block
4. M5 Screws (No. 3 included)

### BASE BLOCK



| CODE         | CONNECTION TYPE     | GAS              | NOMINAL PRESSURE<br>bar           | F            | PACKAGING |      |     |
|--------------|---------------------|------------------|-----------------------------------|--------------|-----------|------|-----|
|              |                     |                  |                                   |              | type      | kg   | pcs |
| PF-01US-00O2 | Welding fitting Ø10 | O <sub>2</sub>   | 4 <sup>+1.0</sup> <sub>-0.0</sub> | M16 x 1,25   | bag       | 0.21 | 1   |
| PF-01UP-00O2 | Hose barb           |                  |                                   |              |           |      |     |
| PF-01US-000V | Welding fitting Ø10 | Vacuum           | ≤ -0,4                            | M16 x 1 sx   | bag       | 0.21 | 1   |
| PF-01UP-000V | Hose barb           |                  |                                   |              |           |      |     |
| PF-01US-00AC | Welding fitting Ø10 | Medical Air      | 4 <sup>+1.0</sup> <sub>-0.0</sub> | M18 x 1 sx   | bag       | 0.17 | 1   |
| PF-01UP-00AC | Hose barb           |                  |                                   |              |           |      |     |
| PF-01US-0N2O | Welding fitting Ø10 | N <sub>2</sub> O | 4 <sup>+1.0</sup> <sub>-0.0</sub> | M18 x 1,25   | bag       | 0.19 | 1   |
| PF-01UP-0N2O | Hose barb           |                  |                                   |              |           |      |     |
| PF-01US-0CO2 | Welding fitting Ø10 | CO <sub>2</sub>  | 4 <sup>+1.0</sup> <sub>-0.0</sub> | M 22 x 1,5   | bag       | 0.19 | 1   |
| PF-01UP-0CO2 | Hose barb           |                  |                                   |              |           |      |     |
| PF-01US-0AC8 | Welding fitting Ø10 | Instrument Air   | 8 <sup>+1.0</sup> <sub>-0.0</sub> | M17 x 1,5 sx | bag       | 0.19 | 1   |
| PF-01UP-0AC8 | Hose barb           |                  |                                   |              |           |      |     |

### OUTLET

| CODE         | GAS            | NOMINAL PRESSURE<br>bar           | PACKAGING |      |     |
|--------------|----------------|-----------------------------------|-----------|------|-----|
|              |                |                                   | type      | kg   | pcs |
| PF-02UU-50O2 | Oxygen         | 4 <sup>+1.0</sup> <sub>-0.0</sub> | bag       | 0.21 | 1   |
| PF-02UU-500V | Vacuum         | ≤ -0,4                            | bag       | 0.21 | 1   |
| PF-02UU-50AC | Medical Air    | 4 <sup>+1.0</sup> <sub>-0.0</sub> | bag       | 0.17 | 1   |
| PF-02UU-5N2O | Nitrous Oxide  | 4 <sup>+1.0</sup> <sub>-0.0</sub> | bag       | 0.19 | 1   |
| PF-02UU-5CO2 | Carbon Dioxide | 4 <sup>+1.0</sup> <sub>-0.0</sub> | bag       | 0.19 | 1   |
| PF-02UU-5AC8 | Instrument Air | 8 <sup>+1.0</sup> <sub>-0.0</sub> | bag       | 0.19 | 1   |

