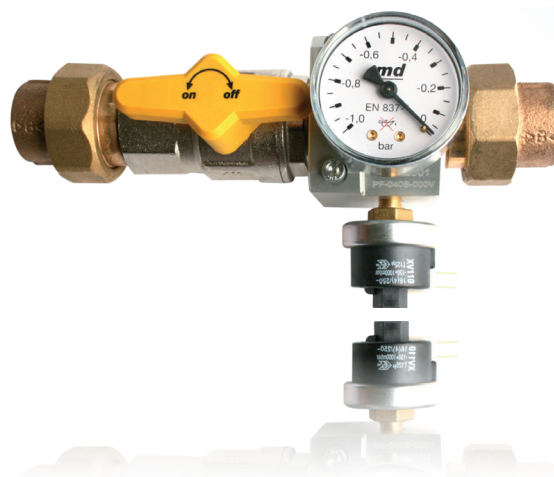




IDENTIFICATION

- ▶ Endocavitary suction line control and shut-off unit
- ▶ Body in anodized aluminium
- ▶ Provision for plug-in axial or radial line vacuum gauge
- ▶ Facility to install vacuum sensor for upstream pressure monitoring
- ▶ Pipes inlet and outlet with fitting for pipe welding
- ▶ Identification of closing hand-knobs by means of color associated with vacuum
- ▶ Laser engraved marking of production lot and product code



CE MARKING

Notified body: 0426

CE marking in risk class II B in accordance with Legislative Decree 24 February 1997, no. 46 "Implementation of Directive 93/42/EEC, concerning Medical Devices" and further modifications

REFERENCE STANDARD

ISO 7396-1: "Medical gas pipeline systems - Part 1: Pipeline systems for compressed medical gases and vacuum"

ISO 15001: "Anaesthetic and respiratory equipment. Compatibility with oxygen"

* Validity of the standards is referred to the current year

- ▶ Gas: Vacuum
- ▶ Storage temperature: -20 °C ÷ +60 °C
- ▶ Working temperature: +10 °C ÷ +40 °C
- ▶ Inlet/outlet pipe diameter: Ø = 28 x 1 mm

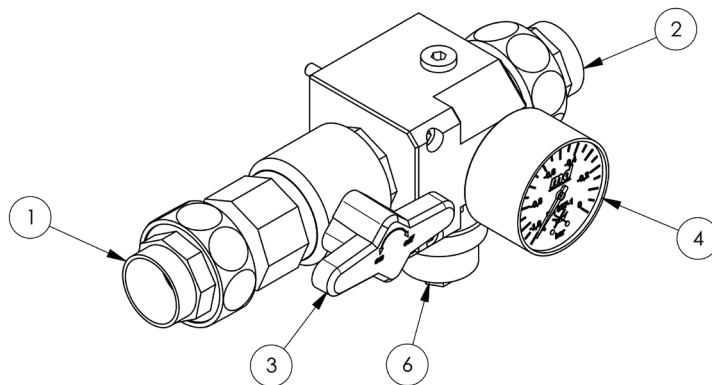
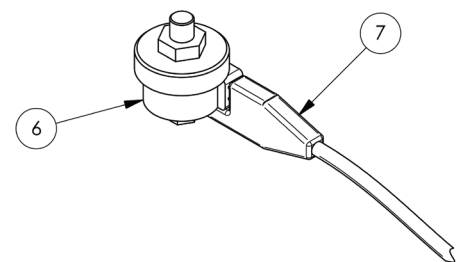
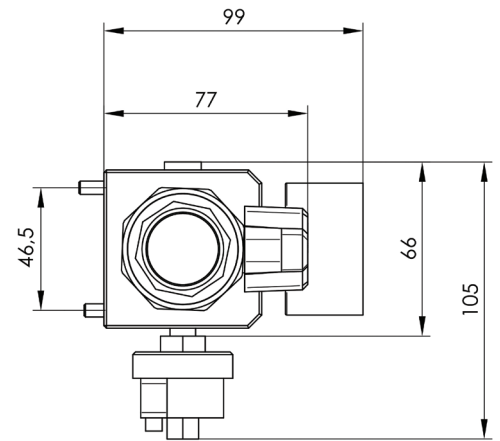
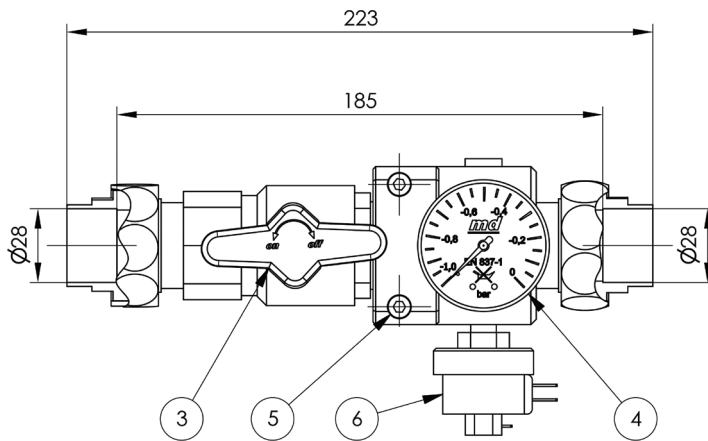
- ▶ Provision for pressure sensor connection G 1/8"
- ▶ Provision for pressure gauge connection G 1/8"
- ▶ Accuracy class of pressure gauges: 2.5
- ▶ Packaging and dimensions: bag
- ▶ Weight (item code **PF-350S-000V**): 1.53 Kg





Vacuum control unit

DIMENSIONS



KEY:

- 1. Inlet welding fitting for Ø28 pipe
- 2. Outlet welding fitting for Ø28 pipe
- 3. Shut-off valve
- 4. Axial vacuum gauge
- 5. M5 fastening screw (no. 2)
- 6. [opzionale] Vacuum switch
- 7. [opzionale] Vacuum switch wiring connector

CODE	DESCRIPTION	VACUUM SWITCH* -0,34 bar [optional]
PF-350S-000V	Vacuum control unit	KT-2200-000V

* Connection cables not included.

Connection cables available: L = 0.7 m (cod. MP-2200-5000); L = 1.5 m (cod. MP-2200-3000); L = 2.5 m (cod. MP-2200-4000)

